

## G $\alpha_{12}$

**Catalog Number:** 26026

**Gene Symbol:** GNA12

**Description:** Anti-G $\alpha_{12}$  Mouse Monoclonal Antibody

**Background:** Heterotrimeric G proteins are essential cellular signal transducers. G $\alpha_{12}$  is a member of the G $_{12/13}$  subfamily of G proteins. Biochemical and physiological functions of G $\alpha_{12}$  are being explored.

**Immunogen:** A synthetic peptide from the N-terminal region of human G $\alpha_{12}$  protein

**Tested Applications:** ELISA, WB, IHC, IP

**Recommended Dilutions:**

ELISA	1:100-1:5000
WB	1:100-1:2000
IHC	1:50-1:100

**Concentration:** 1 mg/ml

**Host:** mouse

**Clonality:** Monoclonal

**Isotype:** IgG

**Purity:** Purified from ascites

**Format:** Liquid

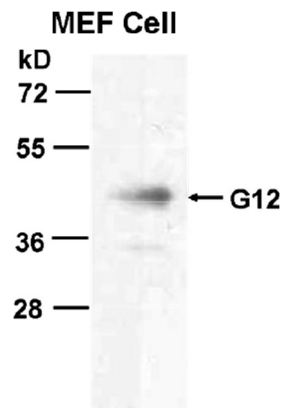
**Preservative:** No

**Constituents:** PBS (without Mg $^{2+}$  and Ca $^{2+}$ ), pH7.4, 150 mM NaCl, 50% glycerol

**Species Reactivity:** G $\alpha_{12}$  antibody recognizes G $\alpha_{12}$  of vertebrates.

**Storage Conditions:** Store at -20°C. Avoid freeze / thaw cycles

### Western blot:



**WB: anti-Gna12 mAb**

### Western blot analysis of G $\alpha_{12}$ proteins.

MEF whole-cell lysate was used for western blot with anti- G $\alpha_{12}$  mouse monoclonal antibody (Cat. # 26026).

FOR RESEARCH USE ONLY. NOT FOR DIAGNOSTIC APPLICATIONS